

# Bug Search Identification Guide

No legs, looks like a worm

Has a shell

## Roundworm

- Clear body
- Looks like a thin earthworm



## Leeches

- Suckers at both ends
- Moves by stretching its body



## Aquatic Moth

- Body is covered in "hairs"
- Crawls like a caterpillar



## Mosquito Larvae

- Has a breathing "tube" and hairs at the end of its body



## Snails

- 1 hard spiral or cap-shaped shell
- Look like snails found on land



## Aquatic Earthworm

- Often red or brown
- Look like terrestrial earthworms



## Black Fly Larvae

- Hairy "fans" on its head
- Able to attach its bottom to surfaces
- Bottom half is fatter than its top half



## Midge

- Moves by "wiggling"
- Red, white or yellowish
- Shaped like the letter "J"



## Clams and Mussels

- 2 hard oval shells attached together



## No-see-ums/Biting Midges

- Pointed with both ends with a hard head
- Moves by "whipping"



## Crane Fly

- Long, squishy body
- Has "tentacles" or lobes at then end of its body



## Horse/Deer Fly Larvae

- Long body covered in bumps
- Pointed at both ends



## Flatworm

- Flat body with small eyespots
- Creeps slowly on surfaces



## Water Quality Index



## Bugs with 6 legs

### Caddisfly Larvae

- Has hooks at the end of its body
- Can be free-living, or have portable cases made out of plants or rocks



### Fishfly, Dobsonfly, and Alderfly Larvae

- Large head with pincer-like jaws
- Fine gills along the body
- Alderflies have a long "tail"
- Fishflies and dobsonflies have "hooks" at the end of its body



### Beetles

- Adults have a hard "shell" covering a pair of wings
- Larvae have a hard head, can have pincer-like jaws, and may have tails or hairs at the end of its body



### True Bugs

- 1 pair of wings that fold on top of each other
- Can have long legs with hairs



### Mayfly Nymph

- 3 tails (sometimes 2)
- Has gills on the side of its body



### Stonefly Nymph

- 2 tails
- No gills on the side of its body



### Dragonfly Nymph

- Large and heavy-bodied
- Big head and eyes



### Damselfly Nymph

- Longer and thinner than dragonflies
- 3 gills (that look like tails) at the end of its body



## Bugs with 7 or more legs

### Sow Bugs

- 2 pairs of antennae —1 long, 1 short
- Gray or brown in colour
- Moves by crawling



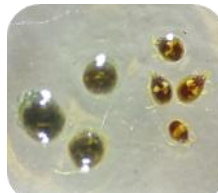
### Scuds

- 2 pairs of antennae about equal length
- Gray or brown in colour
- Swim quickly on their sides



### Water Mites

- Round body with tiny legs— look like small rocks
- Can be brightly coloured— red, blue, green or brown



### Crayfish

- Look like small lobsters
- Large front claws
- Hard shell



Junction Creek  
Stewardship Committee

Comité d'intendance  
du ruisseau Junction

Photos from Macroinvertebrates.org  
and by Cheryl Reyes

info@junctioncreek.com

Office: (705) 525-8736

https://junctioncreek.com

@JunctionCreek

