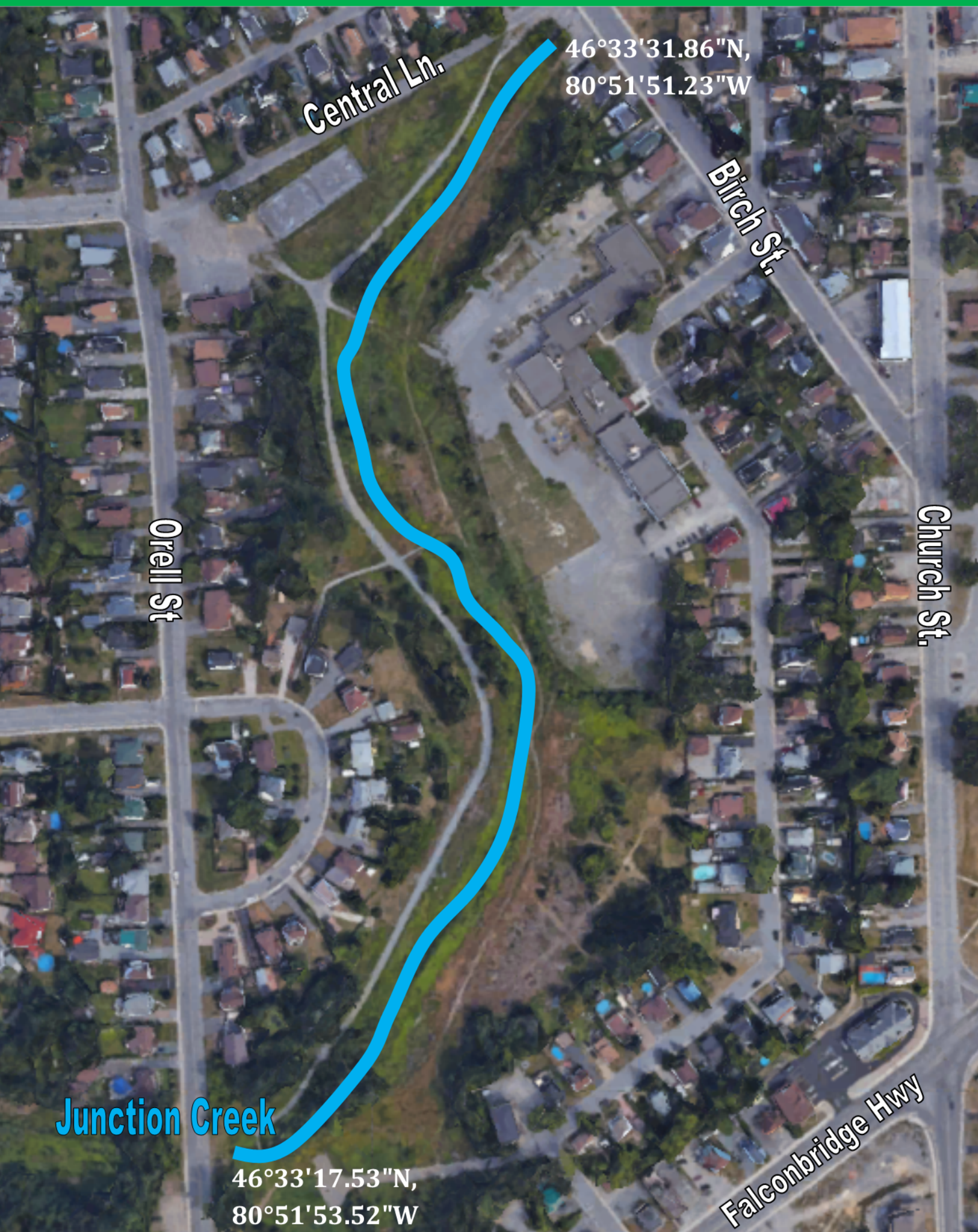


Garson Riparian Revitalization - Project Proposal



SITE DETAILS

Approximate area: 1 hectare, 450 m length of Junction Creek

Classification of Area: Sensitive Natural Feature¹

Site Description: The target site is located in the Garson community along the Junction Creek Waterway Park trail, surrounded by an urban landscape with a public library, elementary school, shopping centre, and public parks nearby. The location connects natural heritage systems, providing important movement corridors for both plants and animals. Note that this site has yet to be re-forested.

¹ Junction Creek Subwatershed Study Figure B5

Current State and Need for Restoration of Riparian Habitat

- Minimal vegetation - Risk of Erosion - Invasive Species - Poor Aquatic & Terrestrial Habitat -



Riparian planting is a recommended restoration activity for the Junction Creek watershed in accordance to the City of Greater Sudbury's Junction Creek Subwatershed Study². In addition, recent studies from the Junction Creek Stewardship Committee have revealed poor water temperature and stream health conditions limiting the distribution and survival of Brook Trout in Junction Creek.

Restoring riparian habitat in Garson, the headwaters of the creek, will subsequently create positive impacts on ecosystems downstream, in particular Brook Trout habitat.

² Junction Creek Subwatershed Study Page 109

Project Goal:

Revitalize the riparian habitat to improve stream health and Brook Trout habitat in Junction Creek.

Project Activities - Spring to Fall

Under guidance of ecologist Dr. Peter Beckett and in collaboration with local community groups:

- ◆ Remove invasive species - for native plants to thrive
- ◆ Plant Willow/Dogwood whips along vulnerable shoreline - to reduce bank erosion
- ◆ Plant 300 native trees & shrubs - to build riparian buffer and stabilize shoreline
- ◆ Plant native wildflower seeds - to enhance riparian buffer and remove excess nutrients
- ◆ Develop Educational Signage - to inform the public about the project and raise awareness

Benefits to the Watershed and Community

Restoring the riparian habitat will have various ongoing benefits to both the ecological and economic health of Greater Sudbury. The project will improve the following:

- Stream health - filter runoff and stabilizing creek banks.
- Biodiversity and pollinators - grow habitat and food for terrestrial and aquatic wildlife.
- Brook Trout habitat - shade stream for cooler water temperatures.
- Flood management - increase attenuation of precipitation.
- Climate change resilience - increase carbon sequestration.
- Beautify the neighbourhood - enhance green spaces along public trail system.
- Community health - improve water quality and encourage trail usage.