

*Junction Creek  
Stewardship Committee*



*Comité d'intendance  
du ruisseau Junction*

# ANNUAL REPORT 2022



*"Creating hope through environmental restoration"*

## MESSAGE FROM THE 2022 OFFICERS

The past year was one of growth and renewal for the Junction Creek Stewardship Committee (JCSC), as we transitioned and adapted to post-pandemic opportunities and frameworks. We were excited to renew in-person engagement and activities and felt that excitement reflected back from the community.

We had a bittersweet farewell to long-term staff member Brandon Holden as he moved onto new adventures in Ottawa. Through wage subsidy programs and funder support, the JCSC was able to bring on 14 seasonal staff and placement students to execute a variety of different projects in 2022. Staff encouraged community science programs and conducted a new turtle study and bat surveys.

The return of our annual festival and trout release event brought in the largest number of participants ever. We were also able to connect with over 1,300 youth through school programs, our Empowering Youth for Junction Creek program, and new Nature Discovery Backpack Lending program. Through community collaboration, new grants, and volunteer support, we worked on restoring impaired habitat through streambank stabilization, invasive species management, and shoreline planting. We investigated stormwater pollutants and sedimentation impacting water quality in the watershed, and established Watershed Canada's Natural Edge Program in Sudbury to facilitate shoreline restoration. In total, over 930 trees, shrubs, and wildflowers were planted.

While we were able to join together again in celebrations and learning, the past few years have shown us the creek's innate ability to connect us as a community, whether directly or at a distance. Junction Creek, and the green spaces around it, will continue to be important components of our community, and as more awareness is raised around the importance of biodiversity, connectivity, and naturalization, we look forward to continuing to work on aligned initiatives with your support. The JCSC wouldn't be who we are without the efforts of our staff, volunteers, community partners, funders, and supporters – thank you, merci, miigwetch to all friends of the creek!

Sincerely,

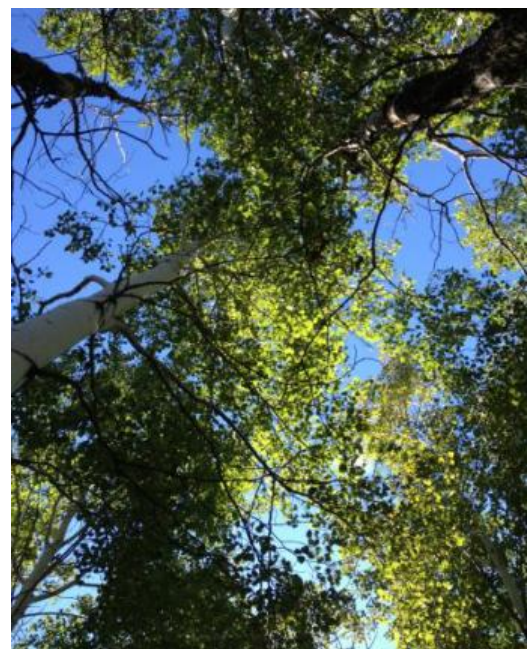
Allison Merla, President

Rachelle Niemela, Vice-President

Erin Calder, Secretary

Paula Worton, Treasurer

*Officers, Junction Creek Stewardship Committee*



## TABLE OF CONTENTS

<b>Acknowledging Anishinaabe Territory</b>	<b>3</b>
<b>About Junction Creek</b>	<b>4</b>
<b>A Valued Natural Asset</b>	<b>5</b>
<b>Junction Creek Stewardship Committee</b>	<b>6</b>
<b>Board of Directors &amp; Staff</b>	<b>7</b>
<b>2022 at a glance</b>	<b>9</b>
<b>Research &amp; Monitoring</b>	<b>10</b>
• Research projects	11
<b>Environmental Restoration</b>	<b>12</b>
• Invasive species project	13
• Garbage clean-ups	14
• Stormwater project	15
• Riparian restoration projects	16
• Restoration projects cont'd	17
<b>Education &amp; Outreach</b>	<b>18</b>
<b>Connecting the Community</b>	<b>19</b>
• Festival & Trout Release	20
• Community programs	21
• Supporting community programs	23
• Fundraisers	24
<b>2022 Financial Summary</b>	<b>25</b>
<b>Acknowledgements to Supporters</b>	<b>26</b>
<b>Become a creek steward</b>	<b>27</b>

## Acknowledging Anishinaabe Territory

The work of the Junction Creek Stewardship Committee (JCSC) takes place on Robinson Huron Treaty territory and on the traditional lands of Atikameksheng Anishnawbek and Wahnapiatae First Nation.

The JCSC offers our gratitude and solidarity to all First Nations, Inuit and Métis peoples who have, and continue to care for, protect and defend this beautiful land and water. We honour their long history on these lands and contributions as the traditional stewards.

As settlers in the environmental nonprofit sector, the JCSC remains devoted to our work in restoring the Junction Creek watershed in the spirit and practice of Truth and Reconciliation. We recommit ourselves to honouring our obligations and responsibilities as treaty people. At the same time, we seek a renewed relationship with the Indigenous Peoples of this land, one based on honour and deep respect as we work to understand and respect Indigenous sovereignty and stewardship knowledge of the land and water.

As individuals and an organization, we will continue to listen, learn, reflect, act, and remain accountable to be in good relationships with Indigenous Peoples, the lands and waters, and all living things. We will make amends for past injustices and concretely seek to repair past wrongs in a way that supports the well-being of the communities connected to the Junction Creek watershed.

We seek to establish, repair, and foster sincere and meaningful relationships based on mutual respect, understanding, trust, and acceptance. We welcome opportunities to reciprocate the transfer of knowledge and resources to help heal and restore the land, water, and communities.

Moving forward, these relationships will strengthen our connection to each other and Mother Earth. Together, may we care for this land and each other, drawing on the strength of braiding Traditional Knowledge, Western science, and community action; keeping in mind the generations to come.

Miigwetch and thank you!



With gratitude and respect, we continue to reflect upon the teachings and connections formed from the ceremonial Water Walk, Enji-Tibew'eseng Nibi Nikwejiwong led by nēhiyaw (Plains Cree) Mide-Kwe Water Walker Tasha Beeds.

# Junction Creek Watershed

## The Urban Waterway of Greater Sudbury

Headwater:  
Garson Mine

Nibi Nikwejiwong (Junction Creek)  
is within the traditional lands of the  
Atikameksheng Anishnawbek and  
Wahnapitae First Nation.

- Lake
- Marsh/Fen
- River/Stream
- Junction Creek
- Road
- Junction Creek Watershed

52 km

10 Wards

The route of Junction Creek to Lake Huron

Drains into the Vermilion River,  
then Spanish River,  
into the North Channel  
and Lake Huron



# A Valued Natural Asset

The Junction Creek watershed is a valued natural asset in Greater Sudbury. It serves as a wildlife corridor and accessible green space in an urban centre where past development has compromised its health. The watershed plays an important role in flood management, carbon storage, offers recreational and research opportunities, has historical and cultural significance, and supports diverse natural heritage. Restoring the watershed to a thriving ecosystem results in mutual benefits towards the health and resilience of the community and economic growth.

## Flood Management and Drinking Water

The Junction Creek watershed is over 32,900 hectares in size with five tributaries, connections to numerous lakes, rivers, and municipal drinking water sources. The watershed provides natural flood management through storage and filtration of excess water by wetlands and vegetation. The trees and shrubs along the creek stabilize the shorelines to prevent erosion and degradation of water quality. The creek is also utilized by storm water systems and sewage treatment facilities. Always remember to use creek friendly practices to help reduce pollutants from entering our waterways.

## Recreation and Eco-tourism

The creek is central in the community and features the Junction Creek Waterway Park trail along most of its urban reaches. Over 60,000 Sudburians live within a 10-minute walking distance from this trail system. The Junction Creek parkway allows residents and visitors to explore the trails, connect with the ecosystems surrounding the creek, and enjoy the natural beauty of Greater Sudbury while attaining healthier lifestyles.



## Habitat and Wildlife

The Junction Creek watershed is home to diverse vegetation communities and wetlands, creating habitat for a range of critters including approximately 28 species 'at-risk'. The following number of species have been identified in the watershed: 174 birds, 48 mammals, 25 reptiles and amphibians, and 31 fish.



# JUNCTION CREEK STEWARDSHIP COMMITTEE

## RESEARCH • RESTORATION • EDUCATION • CONNECTING THE COMMUNITY



The Junction Creek Stewardship Committee is a not-for-profit organization focused on the restoration of a large urban waterway in Greater Sudbury, known as Junction Creek. The Committee was formed by a group of concerned citizens in 1999, incorporated in 2008, and became a Canadian registered charity in 2019.

**Our Vision:** "A healthy and revitalized Junction Creek ecosystem"

### Our Mission

"To lead the way for improving and maintaining a healthy Junction Creek watershed by:

- conducting research and monitoring programs to create understanding and inform sound decisions
- organizing restoration activities to recover and protect the watershed
- providing educational opportunities to share knowledge and promote its ecological, economic, and health benefits
- connecting the community with Junction Creek to empower long-term stewardship"



## Board of Directors 2022-2023

*A dedicated group who volunteer their time to oversee the activities of the JCSC. Their mentoring, guidance, and support are gratefully recognized by staff.*

**Allison Merla – President**

*Advisor, Environmental, Vale Canada Ltd.*

**Rachelle Niemela – Vice-President**

*IT Manager, Cambrian College (retired)*

**Erin Calder – Secretary**

*Environmental Consultant, Klohn Crippen Berger*

**Paula Worton – Treasurer**

*Registered Nurse (retired)*

**Brigitte Angster-Beckett – Director**

*Technologist, Biology Department Laurentian University (retired)*

**Daniel Campbell – Director**

*President, Birchbark Environmental Research Ltd.*

*Adjunct professor, School of Natural Sciences, Laurentian University*

**Franco Mariotti – Director**

*Staff Scientist, Science North (retired)*

**Gerard Courtin – Director**

*Environmental Biologist and Forensic Botanist, Laurentian University (semi-retired)*

**Kayla Stewart – Director**

*Admin Coordinator, Greater City Concrete Works*

**Margaret Hoar – Director**

*Professor of Michener/Laurentian Radiation Therapy (retired)*

**Peter Beckett – Director**

*Wetland Ecologist, Biology Department Laurentian University*

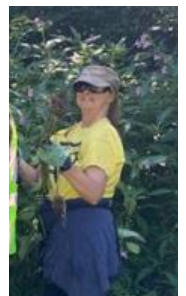


Photo Credit: Tyler Clarke Sudbury.com



## Junction Creek Youth Council 2022

*From left to right*

Janelle (É.s.c. l'Horizon)

Katrine (É.s.c. l'Horizon)

Claudie (É.s.c. l'Horizon)

Adam (Lockerby S.S.)

Justine (Collège Notre-Dame)

Ava (Lasalle S.S.)

Kalyani (Lo-Ellen Park S.S.)

*Absent:*

Summer (Lockerby S.S.)



## Staff 2022

Olivia Bennett  
*Environmental Outreach & Science  
Communication Intern*

Jessica Damaren  
*Environmental Biologist*

Daniel Guinto  
*Lead Turtle Field Tech*

Brandon Holden  
*Program Coordinator*

Devin Kennis-Nadon  
*Environmental Biologist  
Project Coordinator*

Sabrina Lounsbury  
*Stream Restoration & Stewardship Intern*

Danielle Pitre  
*Wildlife Naturalist*

Lloyd Rowe  
*Stream Research Coordinator*

Adam Selalmatzidis  
*Wildlife Naturalist*

Miranda Virtanen  
*Executive Director*

## Summer Positions in partnership with Amphibian Reptile and Conservation Canada

Owen Dyer  
*Environmental Biologist*

Chanel Lalonde  
*Environmental Biologist*

Sidney Smith  
*Environmental Biologist*

Kayla Twilley  
*Environmental Biologist*

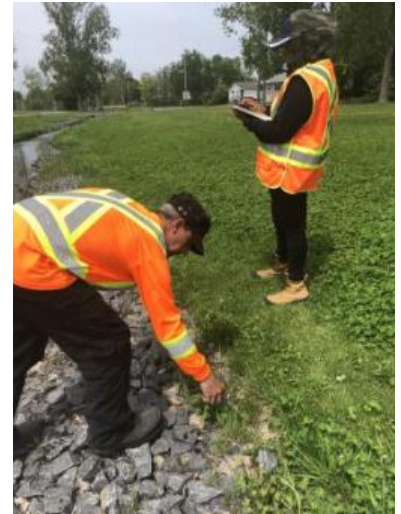
## Volunteer Placements

Aakash Dogra, Luc Moreau,  
Shahin Jozaghian, Sreelakshmi Sreevalsan  
*Cambrian College*

Valérie Desloges  
*Collège Boréal*

Aaron Forget  
*Community Volunteer Program*

Cheyenne Young  
*École secondaire catholique Champlain*



# 2022 **TOGETHER** **DIFFERENCE** AT A GLANCE **WE MAKE A**



**3,500**

Brook Trout  
re-introduced  
into the creek



**1,034**

Kg of garbage  
removed

**930**

trees, shrubs and  
plants



**3,411**

participants and  
volunteers



**3,027**

volunteer hours



Photo Credit: Tyler Clarke Sudbury.com



**BEFORE**



**AFTER**



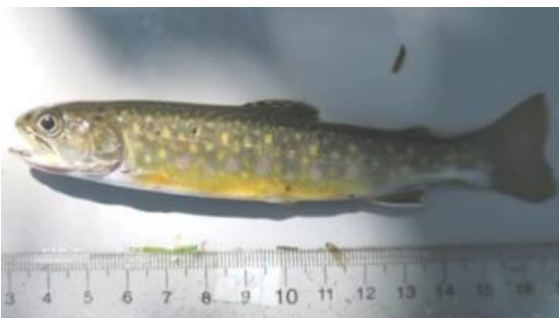
Junction Creek Van, donated by Laking Toyota and Design de Plume in 2019

# RESEARCH & MONITORING

## HIGHLIGHTS 2022

- **NEW** turtle research study
- **NEW** acoustic bat surveys
- Surveyed **2** benthic macroinvertebrate sites
- Student research projects along the creek
- Supported community science programs

We continue to maintain strong research programs and long-term monitoring initiatives to gain a better understanding of the Junction Creek watershed and for guidance in restoration and management. We collaborate with local experts and stakeholders to develop projects, collect data and produce reports on the current state of various ecological components of the upper reaches of Junction Creek.



## RESEARCH IN JUNCTION CREEK

'Stream indicators' are features of the aquatic environment that reveal whether the stream is healthy and when it is changing. The JCSC strives to maintain monitoring programs to collect data on stream indicators and conditions, including:

- **WATER CHEMISTRY:** Conduct monthly water sampling at 13 sites in Junction Creek between Garson and Kelly Lake, and implement ongoing water monitoring via data loggers when able to.
- **AQUATIC LIFE (BENTHOS):** Collect annual benthic samples using Canadian Aquatic Biomonitoring Network protocols to determine the aquatic bugs (macroinvertebrates) present in the creek.
- **FISH COMMUNITIES:** Conduct fish community studies every 3 to 5 years to assess species presence and distribution in the upper reaches of Junction Creek.
- **AMPHIBIANS:** Conduct annual acoustic surveys of frog and toad calls during the spring to help track long-term trends in species diversity and climate.



## RESEARCH IN JUNCTION CREEK 2022

In 2022, the Junction Creek field crew continued to collect scientific data to enhance long-term stream monitoring programs, contributed to community science programs, filled data gaps for species at risk, and provided assistance to other research projects being carried out in the Junction Creek watershed.

### BAT SURVEYS ALONG JUNCTION CREEK

This summer, the JCSC team embraced the nocturnal life and conducted bat surveys in Garson, New Sudbury, the Donovan, and Lively. Equipped with an Echo Meter Touch 2 from the Willis Bat lab, staff were over the moon to listen, record, and identify 7 of 8 different Ontario bat species in real time, including the endangered Tricoloured Bat, Little Brown Myotis, and Northern Long-Eared Bat. Since there is a lack of scientific data on the populations of bats in Sudbury, surveys like these are important for filling data gaps to aid species at risk conservation. We hope to secure funding to continue bat survey efforts and offer community programs.



### NEW PROJECT FOR TURTLE CONSERVATION IN SUDBURY

The JCSC started a collaborative turtle project in partnership with Laurentian University and McMaster University to fill knowledge gaps and inform the restoration of distressed Blanding's Turtle habitat in the Junction Creek watershed. This project complements previous turtle research projects completed in 2019 and 2013-2014 and is undertaken with the financial support of the Government of Canada provided through the federal Department of Environment and Climate Change. Results will be used for site-specific habitat restoration and conservation efforts for the improvement and management of critical habitat to meet recovery needs of Blanding's Turtles in Greater Sudbury.

Overall, 41 unique individual turtles were captured between August and December 2022 (7 Blanding's Turtles, 33 Midland Painted Turtles, and 1 Common Snapping Turtle). A team of 7 researchers from the McMaster Ecohydrology lab measured soil depth, identified vegetation species, and estimated vegetation percent cover at 900 plots! They also collected a few soil samples and analyzed these in the lab to better understand the physical properties of potential turtle nesting habitat. In addition to field research, free outreach programs were delivered by JCSC to spread conservation messages and promote community science.



# ENVIRONMENTAL RESTORATION

## HIGHLIGHTS 2022

- **1,034** kg of garbage removed from the creek and surrounding green spaces
- **930** trees, shrubs, and wildflowers planted
- **Over 900** kg of invasive plants removed
- **72** tree guards installed
- **NEW Natural Edge Program**

We develop data-based restoration and conservation programs, identifying areas that require improvement and prioritizing efforts to recover and protect the shoreline habitat and biodiversity of Junction Creek. We use ecological approaches to restore impaired habitat and invite citizens to participate in creek projects.

## RESTORING LIFE ALONG THE SHORE

The land surrounding waterways is known as the **'riparian zone'** and plays an important role in water quality, flood management, carbon storage and overall stream health. Past logging, mining and ongoing development have impaired much of Junction Creek's riparian zone, resulting in stream bank erosion, lost plant communities, and contaminated runoff.

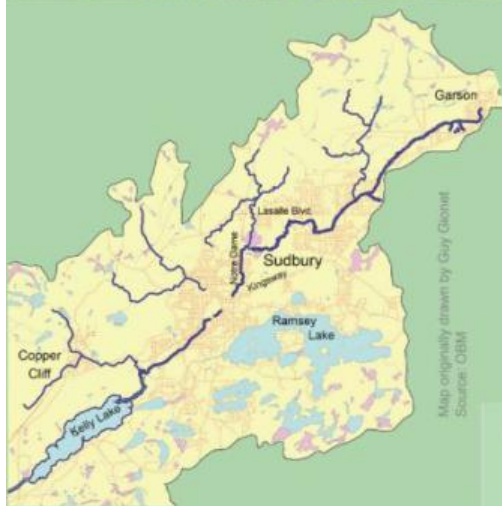
The following restoration activities are conducted and monitored in the upper reaches of Junction Creek to restore riparian habitat, build climate resilience and increase biodiversity:

- **NATIVE VEGETATION:** Plant a variety of native trees, shrubs, wildflowers and other plants.
- **SHORELINE STABILIZATION:** Use bio-engineering techniques, such as live stakes and fascines, to strengthen eroding stream banks.
- **INVASIVE SPECIES:** Survey for invasive species and remove targeted invasive plants.
- **BROOK TROUT RE-INTRODUCTION:** Release stock Brook Trout to re-establish a stable population.
- **GARBAGE CLEAN-UPS:** Coordinate and empower community creek clean-ups.





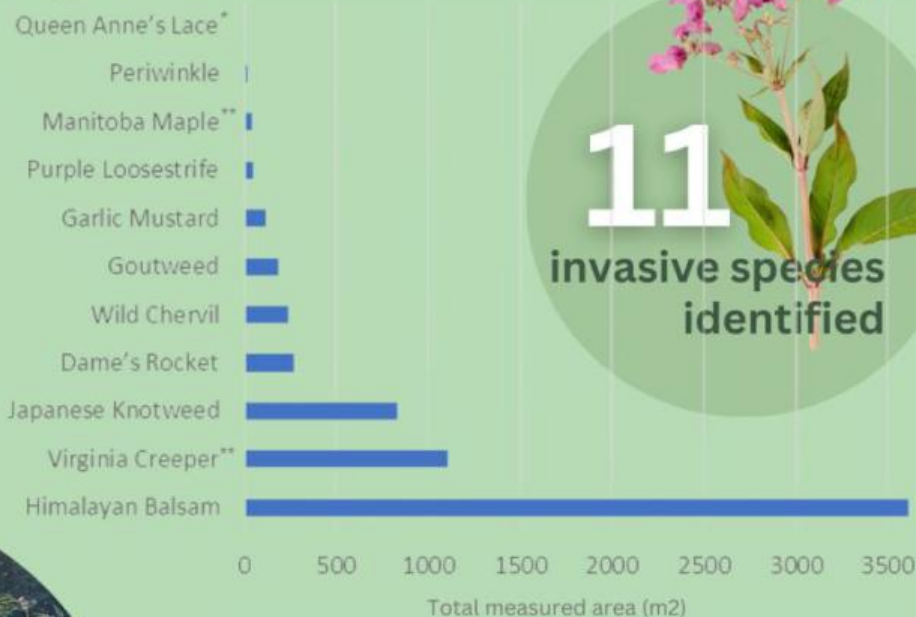
## Junction Creek Invasive Species Projects 2022



**16 kms surveyed**  
for invasive terrestrial plants along  
the upper reaches of Junction Creek

**12 project activities**

Invasive Species Workshop  
Educational Walks  
Invasive Pulls  
Presentations & Displays



Total measured area does not equate to the whole area infested by that species.  
\*single and scattered plants \*\*widespread, covered all or most of a reach.

**225 Volunteers & Participants**



**>900 kgs**  
of invasive plants  
**REMOVED**  
from 5 locations

Projects supported by:



## 2022 Clean-Ups At-a-Glance

### Top 3 items found in Junction Creek



**9 CLEAN-UPS**  
+ SOLO CLEAN UPS

**80 VOLUNTEERS**

**192 BAGS OF GARBAGE**

**1034 KG OF TRASH**

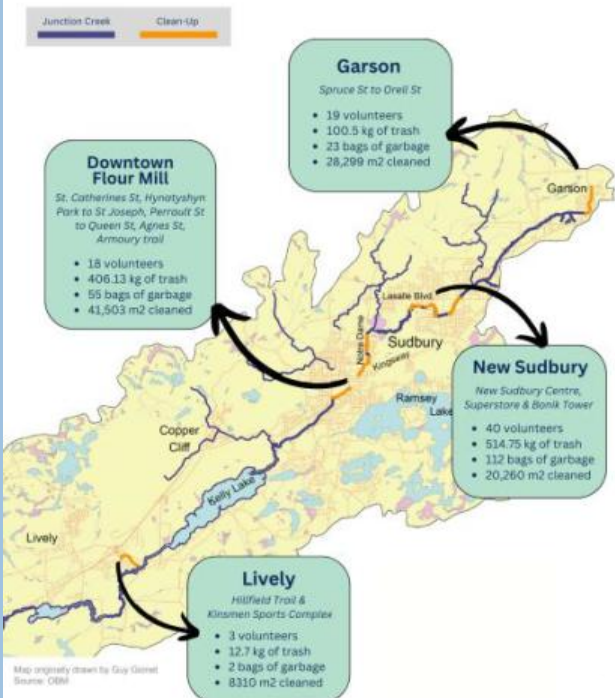
### CLEAN-UP GROUPS 2022

École Secondaire Catholique Champlain  
École Secondaire Catholique l'Horizon  
Empowering Youth for Junction Creek  
Fisher Wavy  
Junction Creek Members  
Pioneer Construction  
Scouts 15 Sudbury  
Volunteer Sudbury  
Youth Engagement Council  
and volunteers from the general public

Thank you, merci, miigwetch!



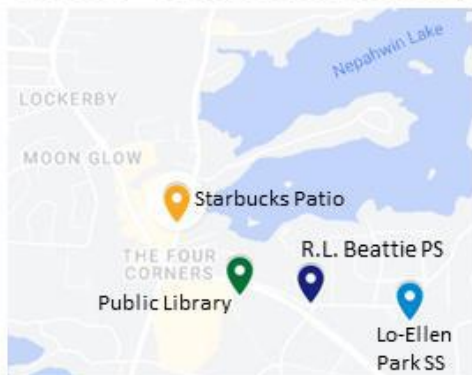
### MAP OF JUNCTION CREEK CLEAN-UPS 2022 by community





Diverting stormwater pollutants from local waterways in Greater Sudbury (N'Swakamok).

## 4 sites – South End Sudbury



September to November 2022

**8**

**catch basins**

that drain into Nepahwin Lake

**31.9** kgs  
**litter, soil & organics**

## Catch Basin Insert Filters Used



EagleStormNest



LittaTrap

This project was undertaken with the financial support of the Government of Canada.

Ce projet a été réalisé avec l'appui financier du gouvernement du Canada.

**Canada**

Chewing gum 8%

Food wrappers 8%

Paper 10%

Soft plastic 10%

Hard plastic 10%

**Litter Composition**

Cardboard 20%

Cigarettes 25%

Rubber 5%

Glass 5%

> 30.1 kgs of soil & organics

**37** volunteers

Project partners, volunteers, and supporters:

City of Greater Sudbury  
Greater Sudbury Public Library  
Lo-Ellen Park Secondary School  
Nepahwin Lake Watershed Stewardship Group  
R.L. Beattie Public School  
The Four Corners property management

# PLANTING ALONG JUNCTION CREEK 2022

## NATIVE TREES, SHRUBS, AND WILDFLOWERS

With support from the community and project grants, we once again exceeded planting goals to align our efforts with the City of Greater Sudbury's *Community Energy and Emissions Plan* for reaching Net-Zero by 2050. A huge thank you to all the amazing volunteers, funders, and community partners that contributed their time, knowledge, support, and passion towards repairing Junction Creek! Your work will continue to have a positive impact on the health of the creek, animals, and the communities connected to it.

# 2022

## Junction Creek Planting At-a-glance



776

trees & shrubs (1-3 gal)

64

saplings & plugs



90

wildflowers

Junction Creek  
Stewardship Committee  
Comité d'entretien  
du ruisseau Junction

930

**Plants**  
(+515 seeds)

222

**Volunteers**

12

**Events**  
+ 6 Natural Edge



## Volunteer groups

Deswik

École Secondaire Catholique l'Horizon

École Secondaire Catholique Champlain

Empowering Youth for Junction Creek

Girl Guides - 1st Many Lakes Sparks

Junction Creek Members

Klohn Crippen Berger

Rotary Club

TD Canada Trust

WSP Golder Associates

And various members of the general public!

Thank you funders, supporters, and partners:



Tech for Nature



TD Friends of the  
Environment  
Foundation



Watersheds  
CANADA

Southwestern  
GREENHOUSE  
GROWERS

This project was undertaken with the financial support of:  
Ce projet a été réalisé avec l'appui financier de :



Environment and  
Climate Change Canada

Environnement et  
Changement climatique Canada



NewSudbury  
centre



# EROSION CONTROL ALONG JUNCTION CREEK 2022

## STABILIZING ERODING STREAM BANKS

We worked with stakeholders to address erosion concerns along the Maley Tributary of Junction Creek using ecological infrastructure. In addition to native shrubs, Coir Mats and Coir Logs (made of pure coconut husk fiber) were installed to stabilize the shoreline and strengthen the vegetative buffer along the creek. This will reduce erosion to protect the integrity of the trail system, quality of water, and fish habitat.

This work was completed as part of the 'Urban Stream Restoration for the Long-term Recovery of Junction Creek' project funded by the Government of Ontario. A special thank you for to Southview Greenhouse Growers and OCP Construction Supplies Inc. for the discount on project materials.



Photo credit: Lloyd Rowe

ALL ABOUT

## BEAVER TREE GUARDS

FOR JUNCTION CREEK



Beavers play an important role in watershed health and function. They use trees for food and shelter, which can have unwanted impacts on sensitive urban shoreline habitat that is being replanted.

**FUN FACT**

Beavers prefer to eat maple, aspen, birch, poplar, willow, and alder trees.



**What is a Tree Guard?**

A device for protecting trees from animal or mechanical damage.

Recommended wire fencing for beavers:

- wire thickness of 15-12 gauge
- mesh size of 2"x2"
- height of at least 3 feet



**Using tree guards for Junction Creek:**

- Does NOT harm beavers!
- Protects trees and sensitive shoreline habitat that is being planted and repaired.
- Ecological approach for managing urban beaver populations.



72

tree guards installed by JCSC in 2022



Thank you volunteers and project supporters!

**Peavy Mart      City of Greater Sudbury**



# EDUCATION & OUTREACH

## HIGHLIGHTS 2022

- Over **3,041** participants
- **14** educational programs
- **29** outreach displays, community programs, and presentations

We continue to develop and deliver interactive bilingual educational programs, displays, presentations, and resources to schools and the community at large. Our programs provide opportunities to share knowledge and promote the ecological, economic, and health benefits of the Junction Creek watershed.



With the lifting of social distancing restrictions related to COVID-19, community events and in-person activities returned in 2022. The JCSC offered a combination of virtual and classroom presentations along with a series of outdoor sessions and guided hikes along Junction Creek.

We delivered **14 educational programs** about stream health and local wildlife and provided programming during Greater Sudbury's 2-day *Children's Water Festival*. In total, we reached a total of **1,439** participants from **32** different schools across Greater Sudbury.

We delivered **9** guest presentations, **10** guided hikes, **6** public workshops, and **4** outreach displays to **1,602** participants.



# CONNECTING THE COMMUNITY



## HIGHLIGHTS 2022

- Over **3,025 hours** provided by community volunteers
- **NEW Nature Discovery Backpacks**
- Over **34 media** appearances

We connect the community with Junction Creek to develop an increased appreciation for the value of Junction Creek, and promote long-term stewardship. Our programs enhance the Junction Creek Waterway Park trail, encourage public participation in activities and events promoting the creek, and foster relationships within the community. Community stewardship is a great way to collectively contribute towards the long-term restoration of the watershed while participating in fun outdoor activities.



In 2022, JCSC facilitated community stewardship activities, partnered with local organizations, and offered new resources to empower watershed stewardship and positive change in the community, including a NEW Nature Discovery Backpack Lending Program.

## YELLOW FISH ROAD

JCSC offers resources and guidance to support local groups in carryout out Trout Unlimited Canada's *Yellow Fish Road* program to help raise awareness about the impacts of stormwater pollutants on local water quality.

In 2022, we assisted the *Nepahwin Lake Watershed Stewardship Group* and *1st Hazelmere Sparks & Pathfinders* deliver the Yellow Fish Road program. In total, **43 volunteers** distributed over **310 informative flyers** to local homes and painted yellow fish and "RAIN ONLY" stencils above **46 stormwater drains** in the Lo-Ellen and Elm West neighbourhoods.

# THE RETURN OF THE JUNCTION CREEK FESTIVAL



# JUNCTION CREEK FESTIVAL & TROUT RELEASE

**MAY 14TH 2022**

**3500**  
Brook Trout  
released



**21**  
Volunteers



**600+**  
Participants



*Photo credit: top row: Sudbury.com Tyler Clarke*

A HUGE thank you to community participants, partners, and supporters that contributed to the success of the event: Better Beginnings Better Futures, Canadian Mental Health Association – Sudbury/Manitoulin, Coalition for a Liveable Sudbury, Early Childhood Creative Collaborations, Food Basics, Ontario Ministry of Natural Resources and Forestry, Our Children Our Future, Papaya Pops, Real Canadian Superstore, Science North, The Nickel Refillery Twin Forks Neighbourhood Association, Ward 8 Community Action Network, and community volunteers!!

# JUNCTION CREEK COMMUNITY PROGRAMS 2022



Junction Creek  
Stewardship Committee  
Comité d'intendance  
du ruisseau Junction

## EMPOWERING YOUTH FOR JUNCTION CREEK 2022 PROGRAM AT-A-GLANCE

The Junction Creek Stewardship Committee coordinated a free, summer long program in Garson, Flour Mill/Downtown & Lively from July to October 2022 to provide accessible nature-based programming to empower youth 12 to 18 years of age in N'Swakamok/Greater Sudbury.

28 youth participants



34 kg of  
garbage  
removed



Over 30 native  
trees, shrubs &  
flowers planted



Free weekly take-home  
resources for  
participants thanks to  
local sponsors and  
supporters!

27 programs with 17 experts & Knowledge Holders

**Birding along Junction Creek** with Chris & Greg Blomme from the Sudbury Ornithological Society  
**Native Species: Trees of Sudbury and More** with Jessica Damaren from JCSC

**Alien Invasion: Invasive Species in Junction Creek** with Derissa Vincentini from the Invasive Species Centre

**Regreening of Sudbury** with Franco Mariotti & Peter Beckett from the JCSC board of directors

**How healthy is Junction Creek?: A story told by the Bugs & Fish** with Olivia Bennett & Devin Kennis-Nadon from JCSC

**Tracking Reptiles** with Daniel Guinto from JCSC

**Microplastics in Junction Creek** with Adam Selamatidis from JCSC

**Art and Nature** with Lauren, Kayode & Raven from Myths & Mirrors

**Climate Change in Sudbury** with Jennifer Babin-Fenske from the City of Greater Sudbury

**Basic Outdoor Skills** with Chanel Lalonde from JCSC

**Manidoo Bineshii Dreams Field trip** with Manidoo Bineshiinh from Manidoo Bineshii Dreams



Backyard Birder



TANYA FARKOUH MARTIN  
LAWYER

Invasive Species Centre



Barrydowne Paint



TESTMARK

City of Greater Sudbury



## JUNCTION CREEK COMMUNITY PROGRAMS 2022

### NATURE DISCOVERY BACKPACK LENDING PROGRAM

JCSC partnered with Watersheds Canada, Greater Sudbury Public Library, and Atikameksheng Anishnawbek First Nation to offer **30** free **Nature Discovery Backpacks** for youth and families to borrow from local libraries. The backpacks offer the tools and resources to empower participants to explore, connect, and learn with nature.

Free public workshops were delivered to introduce the backpacks to each community. From July to October, **80** backpacks were checked out from the Garson, Lively, and Main Public library.

This project was funded by TD Friends of the Environment Foundation.



### TINY TRACES ALONG JUNCTION CREEK 2021-2022

The *Tiny Traces Along Junction Creek* project is in partnership with Early Childhood Creative Collaborations (ECCCo) and funded by the Community Foundations of Canada. The aim of the project is to support ecological educational opportunities offered through encounters with nature. These experiences with nature bring us closer to understanding the world we live in and the complexity of our interconnectedness.

Project activities were led by ECCCo and environmental artist Sophie Anne Edwards, the lead author of *The Art of Land-Based Early Learning* books. As part of the project, Creativity Boxes filled with art materials and inquiry guides were installed along the creek near participating childcare centres and schools. A variety of seasonal activities were offered to keep participants engaged and learning from the ecosystems along Junction Creek. The children's artwork and quotes about the creek were displayed in a large-scale poster exhibition across the city.



# SUPPORTING COMMUNITY PROGRAMS 2022

The Junction Creek Stewardship Committee welcomes the opportunity to offer local knowledge and collaborate with community partners. We strive to foster relationships, share resources and offer support for projects that align with our initiatives. In addition to ongoing community partnerships and memberships, in 2022 we provided insight, local knowledge, scientific data, resources, contributions, and/or facilitation for the following groups and projects:

Atikameksheng Anishnawbek Community - Nature Discovery Backpacks  
Amphibian and Reptile Conservation Canada - summer positions  
Cambrian College Ecological Restoration Program - student placements  
City of Greater Sudbury - Adopt-a-Spot Program  
City of Greater Sudbury - Community Energy and Emissions Plan (CEEP)  
City of Greater Sudbury - Regreening daylighted section of Junction Creek in Garson  
City of Greater Sudbury - Strong Neighbours Project  
Collège Boréal - student placement and field work experience  
Conservation Sudbury - community rain gauge data collection  
Early Childhood Creative Collaborations - Tiny Traces Along Junction Creek project  
École secondaire catholique Champlain - student placement  
EDDMapS  
Girl Guides, 1st Hazelmere Sparks & Pathfinders  
Great Lakes Marsh Monitoring Program  
Greater Sudbury Public Library - Nature Discovery Backpack Lending Program  
Green Gathering  
iNaturalist, Greater Sudbury Biodiversity Project  
Natural Heritage Information Centre  
Neighbourhood Bat Watch  
Nepahwin Lake Watershed Stewardship Group  
Ontario Nature  
The Land Between - Turtle Road Researchers  
Trout Unlimited Canada - Yellow Fish Road Program  
Water Rangers  
Watersheds Canada programs  
Wildlife Preservation Canada  
WWF-Canada

We also provided expert advice and recommendations to support a green recovery and the conservation and protection of watersheds, critical habitat features, and species at risk.

# JUNCTION CREEK FUNDRAISERS 2022 & ONGOING

## SPONSOR-A-YOUTH Empowering Youth for Junction Creek



**Raised \$3,500! Thank you sponsors!**

KGHM  
Ramakko's Source for Adventure  
New Sudbury Centre  
Tanya Farkouh Martin Professional Corporation  
Tanya VandenBerg REALTOR®  
Testmark Laboratories  
Barrydowne Paint

Thank you!  
Merci!  
Miigwetch!

## GivingTuesday & Holiday Fundraiser

Raised **\$1,145** to help support stream monitoring and species at risk research efforts in the Junction Creek watershed!

# JUNCTION CREEK REUSABLE BAGS FUNDRAISER

For a healthier waterway and community! Get yours today at:

- The Nickel Refillery (227 Regent St.)
- Junction Creek Stewardship Committee (B4-30 Ste Anne Rd.)

100% natural cotton



Processed AZO-free with no hazardous chemicals



THANK YOU!

**\$10 each**  
or  
**5 for \$40**



## Bag Sponsors:



**Peter Beckett Ph.D**  
Associate Professor  
Department of Biology  
Laurentian University

**Jorge Virchez Ph.D**  
Full Professor  
School of Northern Community Studies  
(Geography)

**Robert Jussila**  
1124997 Ontario Inc.  
**Dr. Austin Andrews**  
Dentist

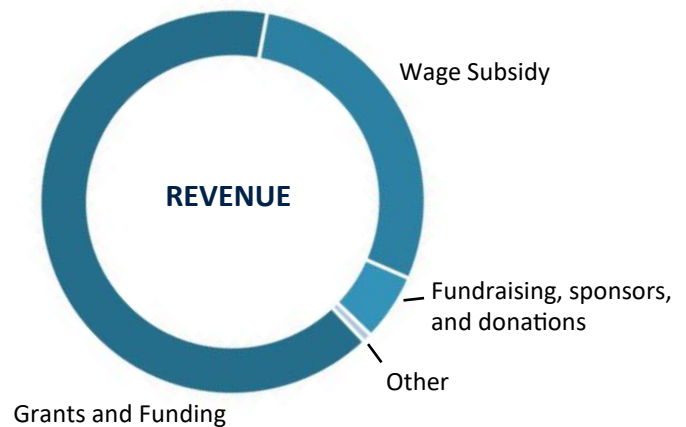
**wood.**

# JCSC 2022 Financial Highlights

We are able to minimize our expenses by sharing resources and receiving in-kind support generously provided by local organizations and academic institutions.

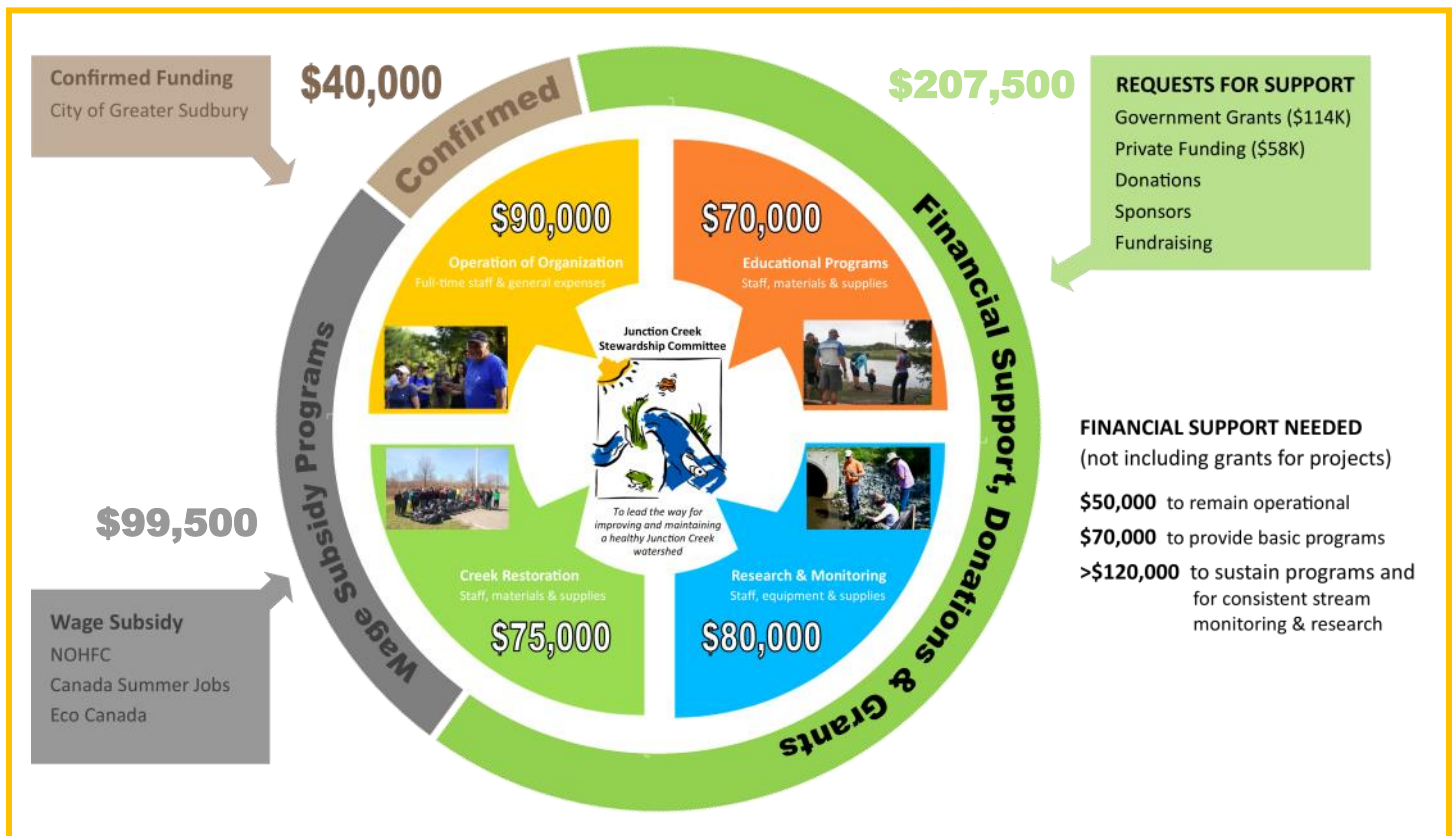
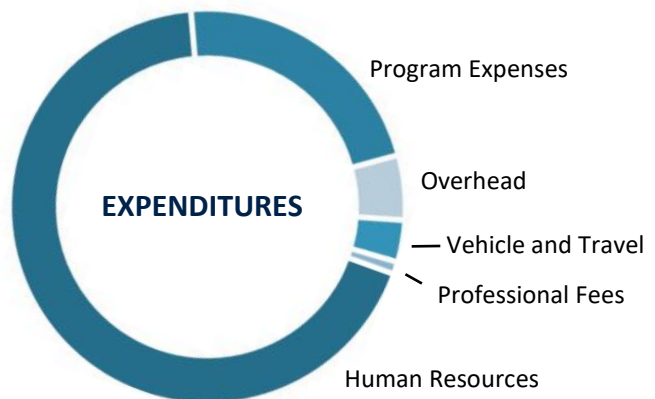
## Revenue

Category	Revenue
Grants and Funding	\$225,153
Wage Subsidy	\$99,506
Fundraising, sponsors and donations	\$19,696
Other	\$2,661
<b>Total Project Value</b>	<b>\$347,061</b>



## Expenditures

Category	Expenses
Human Resources	\$231,919
Program Expenses	\$75,198
Overhead	\$18,081
Vehicle and Travel	\$11,645
Professional Fees	\$3,423
<b>Total Project Expenditures</b>	<b>\$340,266</b>



# THANK YOU FOR THE SUPPORT!

**\$35,000 +**

Government of Canada

Government of Ontario

City of Greater Sudbury

**\$10,000 +**

Community Foundations of Canada

RBC Foundation

EcoCanada

Vale Canada Ltd.

**\$5,000 +**

Earthdancers

TD Friends of the  
Environment Foundation

Freshwater Future

**\$1,000 +**

New Sudbury Centre

KGHM

Ramakko's Source for  
Adventure

Les Jésuites de Sudbury

Sudbury Catholic District  
School Board

Invasive Species Centre

Donner Canadian  
Foundation

(on behalf of Design de Plume)

**\$200 +**

Watersheds Canada

BESTECH & FROSKR

Marymount Academy

Tanya Farkouh Martin  
Professional Corporation

*We welcome donations of all sizes from across the community!*

## JUNCTION CREEK 2022 PROJECT PARTNERS, FRIENDS & SUPPORTERS

4H Club  
Amphibian and Reptile Conservation Canada  
Atikameksheng Anishnawbek First Nation  
Backyard Birder  
Barrydowne Paint  
Better Beginnings Better Futures  
Bike Sudbury  
Canadian Mental Health Association  
Cambrian College  
City of Greater Sudbury  
Coalition for a Liveable Sudbury  
Collège Boréal  
Conseil Scolaire Catholique Nouvelon  
Conservation Sudbury  
Cooperative Freshwater Ecology Unit  
Design de Plume  
Deswik  
Duplicators  
Early Childhood Creative Collaborations  
Earth Care Sudbury  
École secondaire catholique Champlain  
École secondaire catholique L'Horizon  
Federation of Sisters of St. Joseph of Canada  
Fisher Wavy/ Pioneer Construction  
Flour Mill CAN  
Food Basics  
Freshwater Futures  
Fridays for Future Sudbury  
Friends of Roxborough Greenbelt  
Future North  
Garson Lions Club  
Girl Guides - 1st Hazelmere Sparks & Pathfinders  
Girl Guides - 1st Many Lakes Sparks

Great Lakes Pizza  
Greater Sudbury Watershed Alliance  
Greater Sudbury Public Library  
Invasive Species Centre  
Junction Creek Members  
Junction Creek Youth Council  
KGHM International Ltd.  
Klohn Crippen Berger  
L'Arche Sudbury  
Laking Toyota  
Laurentian University  
Les Jésuites de Sudbury  
Lo-Ellen Park Secondary School  
Manidoo Bineshii Dreams  
Mariotti Visuals  
Marymount Academy  
McMaster University  
Myths & Mirrors  
N.A.R Environmental Consultants Inc.  
Nepahwin Lake Watershed Stewardship Group  
New Sudbury Centre  
OMNRF  
Ontario Nature  
Our Children Our Future  
Papaya Pops  
Peavy Mart  
Plastic-Free Greater Sudbury  
Rainbow Routes Association  
Ramakko's Source for Adventure  
RBC Foundation  
Real Canadian Superstore  
reThink Green  
Rotary Club

Salute  
Science North  
Scouts - 15th Sudbury Cub  
Southview Greenhouse Growers  
STREAM Project  
Sudbury Catholic District School Board  
Sudbury Horticultural Society  
Sudbury Naturalist Club  
Sudbury Ornithological Society  
Sudbury Rainbow Crime Stoppers  
Sudbury Shared Harvest  
Tanya Farkouh Martin Professional Corp.  
Tanya VandenBerg REALTOR®  
Tasha Beeds  
Testmark Laboratories Ltd.  
TD Friends of the Environment Foundation  
The Land Between  
The Nickel Refillery  
Topper's Pizza  
Twin Forks Neighbourhood Association  
Vale Canada Ltd.  
Vale Living with Lakes Centre  
VETAC  
Volunteer Sudbury  
Wanup Christmas Market  
Wahnapitae First Nation  
Ward 8 Community Action Network  
WSP Golder Associates  
Watersheds Canada  
Wildlife Preservation Canada  
Will Morin  
Willis Bat Lab  
Youth Engagement Council  
*And countless community volunteers!*



## HOW TO BE CREEK-FRIENDLY

Everyone lives in a watershed and has an impact on local water quality. By preventing pollutants from entering Junction Creek, you are helping to create a healthier waterway, ecosystem and community.

### Please consider these creek-friendly practices

- Prevent pollutants from entering storm drains
- Avoid using pesticides and chemical fertilizers
- Choose non-toxic household products
- Pick up after your pets
- Fix leaks that drip from your vehicle
- Reduce your single-use plastic and waste
- Do not litter and secure loose garbage from blowing away
- When safe to do so, pick up litter



## BE PART OF JUNCTION CREEK'S RESTORATION STORY

- Like and follow us on social media @JunctionCreek
- Join the Junction Creek mailing list to receive quarterly newsletters (*you can unsubscribe at any time*)
- Become a Junction Creek Member and stay informed about upcoming events, opportunities and announcements
- Attend Junction Creek events
- Volunteer 2hrs at a clean-up, tree planting or other stewardship activity
- Donate or become a sponsor  
Charitable Number: 801685611RR0001
- Share skills and knowledge as an expert or advisor
- Join the JCSC's Board of Directors



*Junction Creek  
Stewardship Committee*

*Comité d'intendance  
du ruisseau Junction*



(705) 525-8736



info@junctioncreek.com



B4 - 30 Ste Anne Road  
Sudbury, ON P3C 5E1

<https://junctioncreek.com>

@JunctionCreek

