

## Activity 2.2: Sources of Pollutants Game

In this activity, you will be playing a matching game! Participants will match pollutants to their sources. Knowing where pollutants come from is important for many reasons. It helps us focus our efforts, protect the environment and aquatic life, and use our resources effectively to address various pollutants. Litter is a major source of stormwater pollutants.

### Set-up:

- Print the accompanying worksheet and grab a pen or pencil.
- Print a copy of the 2-sided game pieces and cut them out
  - There are 10 game pieces in total ( 5 pollutants and 5 sources).
  - Matched sources are directly below the pollutants.

### Instructions:

**Explain that the game pieces are common types of pollutants found in stormwater.**

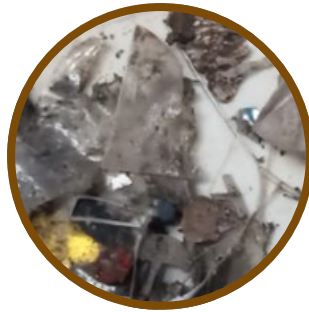
1. Ask participants to match the types of litter to their sources.

**Prompt:** Did you know that cigarettes are a type of plastic pollution?

2. Did you get it right? If not, don't worry, you can always play again!

3. Ask participants to complete the **reflection worksheet**.

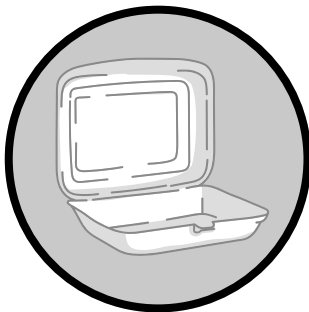
## 2.2 Sources of Pollutants: GAME PIECES



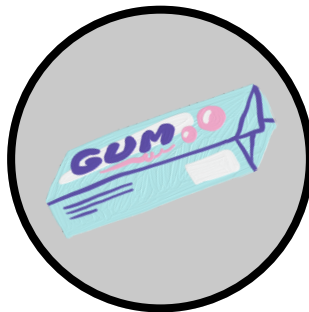
Cigarettes



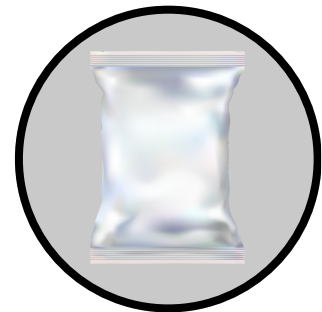
Single-use Plastic



Styrofoam Containers



Chewing Gum



Food Packaging

\*The **sources** (circled in black) are located directly below the **pollutants** (circled in brown).



Junction Creek  
Stewardship Committee

Comité d'intendance  
du ruisseau Junction

## 2.2 Sources of Pollutants: REFLECTION WORKSHEET

**REFLECTION:** What are other types of litter you might find on the ground or water? Where might they have come from?

**REFLECTION:** What are YOUR most common sources of waste? How can you reduce your waste and what are eco-friendly alternatives?