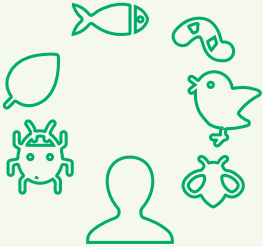


# Boot Brush for Trails



Reducing the introduction and spread of invasive plants



## Why it Matters?

Invasive species can negatively impact biodiversity and shoreline stability along the trails. Invasive plants can spread via seeds, spores and animal feces. This makes our shoes a method of dispersal for these plants.

Help stop the introduction and spread of invasive plants along Sudbury's trails by cleaning your shoes before and after your walk in nature!

## USING A BOOT BRUSH ON THE TRAILS



*Shoes can carry mud or debris containing invasive plant seeds/spores.*

Brush the **treads** and **sides** of your shoes with a boot brush **BEFORE** and **AFTER** your walk on the trails!

## INVASIVE PLANTS ALONG THE TRAILS



Japanese Knotweed



Garlic Mustard



Himalayan Balsam

Report sightings to EDDmapS or iNaturalist



Junction Creek  
Stewardship Committee  
Comité d'intendance  
du ruisseau Junction

Invasive  
Species  
Centre



Centre des  
espèces  
envahissantes



Information about invasive species